

The Tomalok combines robust engineering and state of the art innovation. With a sleek design, the electric drop bolt seamlessly integrates into your gate system, offering a discreet yet powerful safeguard.

Lifting force 30N.

Overcurrent trip: yes.

Current:

Standby 140mA.
Peak Draw 280mA.
Operation 210mA.

Battery backup time: over 24hrs + 20 operations.

Trigger method: volt free and 24v dc compatible, constant and pulsing compatible.

Manual override: yes.

Pin: 150mm Stroke - 20mm diameter stainless steel pin.

Stainless steel: Marine grade Stainless steel BS316. (Black unit is powder coated)

Power: 24v dc.

Power cable: 4 core 5 metres included.

Power supply type: Din rail 24v dc included.

Ground keeper: optional 2 types (with / without gate stop).

Mounting method: M4 jack nuts (included).

Min recommended gate profile: 50mm box.

Unit weight: 4.5kg.

Accessories included:

Power supply, protective flexi cable, jack nut fixing tool, keys.



Gate bolt & power supply kits.



TL-S-150-K

Tomalok Electric Drop Bolt in Stainless. 150mm with 24v Din Rail Power Supply.



TL-B-150-K

Tomalok Electric Drop Bolt in Black - 150mm with 24v Din Rail Power Supply.



TL-SB-150-K

Tomalok Electric Drop Bolt in Black and Stainless - 150mm with 24v Din Rail Power Supply.



TL-A-150-K

Tomalok Electric Drop Bolt in Anthracite Grey - 150mm with 24v Din Rail Power Supply.

Gate bolt, ground stop & power supply kits.



TL-S-150-KIT

Tomalok Electric Drop Bolt in Stainless - 150mm with 24v Din Rail Power Supply and Ground Stop.



TL-B-150-KIT

Tomalok Electric Drop Bolt in Black - 150mm with 24v Din Rail Power Supply and Ground Stop.



TL-SB-150-KIT

Tomalok Electric Drop Bolt in Black and Stainless - 150mm with 24v Din Rail Power Supply and Ground Stop.



TL-A-150-KIT

Tomalok Electric Drop Bolt in Anthracite Grey - 150mm with 24v Din Rail Power Supply and Ground Stop.

Gate bolt, ground plate & power supply kits.



TL-S-150-KIT2

Tomalok Electric Drop Bolt in Stainless - 150mm with 24v Din Rail Power Supply and Ground Plate.



TL-B-150-KIT2

Tomalok Electric Drop Bolt in Black - 150mm with 24v Din Rail Power Supply and Ground Plate.



TL-SB-150-KIT2

Tomalok Electric Drop Bolt in Black and Stainless - 150mm with 24v Din Rail Power Supply and Ground Plate.



TL-A-150-KIT2

Tomalok Electric Drop Bolt in Anthracite Grey - 150mm with 24v Din Rail Power Supply and Ground Plate.

Gate bolt units.



TL-S-150

Tomalok Electric Drop Bolt in Stainless - 150mm.



TL-B-150

Tomalok Electric Drop Bolt in Black - 150mm.



TL-SB-150

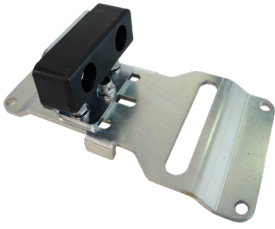
Tomalok Electric Drop Bolt in Black and Stainless - 150mm.



TL-A-150

Tomalok Electric Drop Bolt in Anthracite Grey - 150mm.

Tomalok



TL-GS

Tomalok Ground Stop.



TL-GP

Tomalok Ground Plate.



TL-24V

Tomalok 24v Din Rail Power Supply.



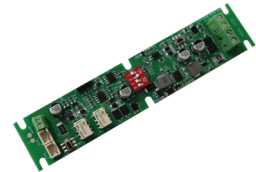
TL-KEY

Tomalok Set of Keys (2).



TL-BAT

Tomalok Set of Batteries (3).



TL-PCB

Tomalok Main Control PCB.

